

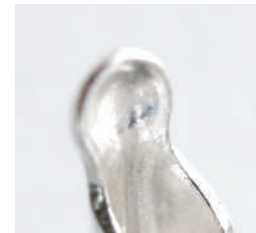


Reduce the consumption of gold in the meantime maintaining the strength.

PAT.P



- Extra light weight is possible as the minimum thickness is 3.5mm by traditional casting method.
- Thickness of the frame is only 0.3mm with our crossfor's stamping method.
- Our Floating diamond make the gemstone looks like floating because the prongs are less noticeable.



Curved prong is strong enough and it hold gem stone firmly in the place.



Beautiful frame in very light weight.



Wide spacing between prongs enables greater amount of light goes in and out for a better diamond shinning effect.

[Available materials]

24K, 18K, 14K, 10K, Pt, SV925 and Brass

[Videos]

Dont forget to scan the QR code below for the product video!



[Earrings 360°]



[Pendant 360°]



FloatindiamondTM 4 prongs model

The mounting to supply



Japan Head Office

TEL: 057-008-9640 FAX: 055-232-9642

Hong Kong Office

TEL: +852-2312-0059 FAX: 852-2312-0079

China Office

TEL: +86-755-2584-2932 FAX: 755-8268-9021

India K&S Collection Pvt Ltd Kabir Sadarangani (Contact Person)

TEL: +91-22-3551-7197 M P: +91-98-6775-5339